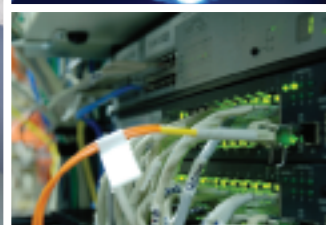




STARLINE®

Raising the bar for flexible power.





A Legacy of Power Distribution

Universal Electric Corporation (UEC), the manufacturer of STARLINE, is built on over 80 years of innovation in delivering safe and flexible power to a variety of industries, businesses and institutions. Expertly designed as a simple, versatile, fast and economical solution for supplying power, our products are unique because they can be tapped instantly at any location. Plus they can dramatically reduce downtime, as well as costs for expansion and new locations, while providing ongoing customization and flexibility in power distribution. And UEC excels at collaborating with design engineers to provide solutions for any application, and for any industry.

UEC's STARLINE® Track Busway and STARLINE® Plug-In Raceway is the industry standard for flexible power in mission critical, data center, university, lab, industrial and retail environments. Time, money, and labor savings have made us the power distribution supplier of choice for businesses that recognize that STARLINE's products are in a class by themselves.





STARLINE Track Busway



Distributing power. Removing limitations.

We've built a better way to provide power to any mission critical, industrial, retail or lab environment. With **STARLINE Track Busway**, easy installation means faster expansions and additions, plus lower cost of ownership. Our **flexible** and **scalable** busway system allows you to relocate power anywhere you need it, and at anytime without shutting down power.

The unique, turn-n-lock connection method used for the plug-in units is the key to our busway's reliability. By inserting the plug head anywhere along the busway and rotating it 90 degrees, you get a constant, locked in, reliable connection – eliminating power interruptions caused by overheating or loss of connections.

STARLINE[®]
T R A C K B U S W A Y



Features

Reduced Facility Construction Costs

- Labor savings mean installation is less expensive.
- Eliminates costly changes and outside labor costs for electrical specialists.
- Lower cost of ownership.

Faster Installation

- Building projects are up and running faster.
- Add, remove or relocate power easily and quickly with no downtime.

Flexibility for the Future

- Plug-in units can be disconnected and connected without de-energizing the busway.
- Requires no routine maintenance.
- Faster and less costly expansion or remodeling.

Environmentally Friendly

- Less installation materials.
- Busway and outlets are reusable and re-locatable.

More Choices

- Scalable and customizable lengths, sizes and configurations to meet your unique specifications.
- A variety of plug-in units and STARLINE's monitoring capabilities make us the preferred choice of data centers and mission critical facilities.

Industries

Mission Critical

By their name and nature, mission critical facilities can't afford costly downtimes when expansion is needed. This makes STARLINE an ideal choice for their power needs.

Retail

Whether for a new store or simplifying the power distribution for an existing one, STARLINE has years of experience providing power for the fast-moving retail environment. And STARLINE allows for lighting and power to be connected in the same housing.

Industrial

Auto, high-tech assembly, and contract manufacturing companies demand a power distribution system capable of providing high density plug-in availability, as well as a system that allows them to meet customer production needs.

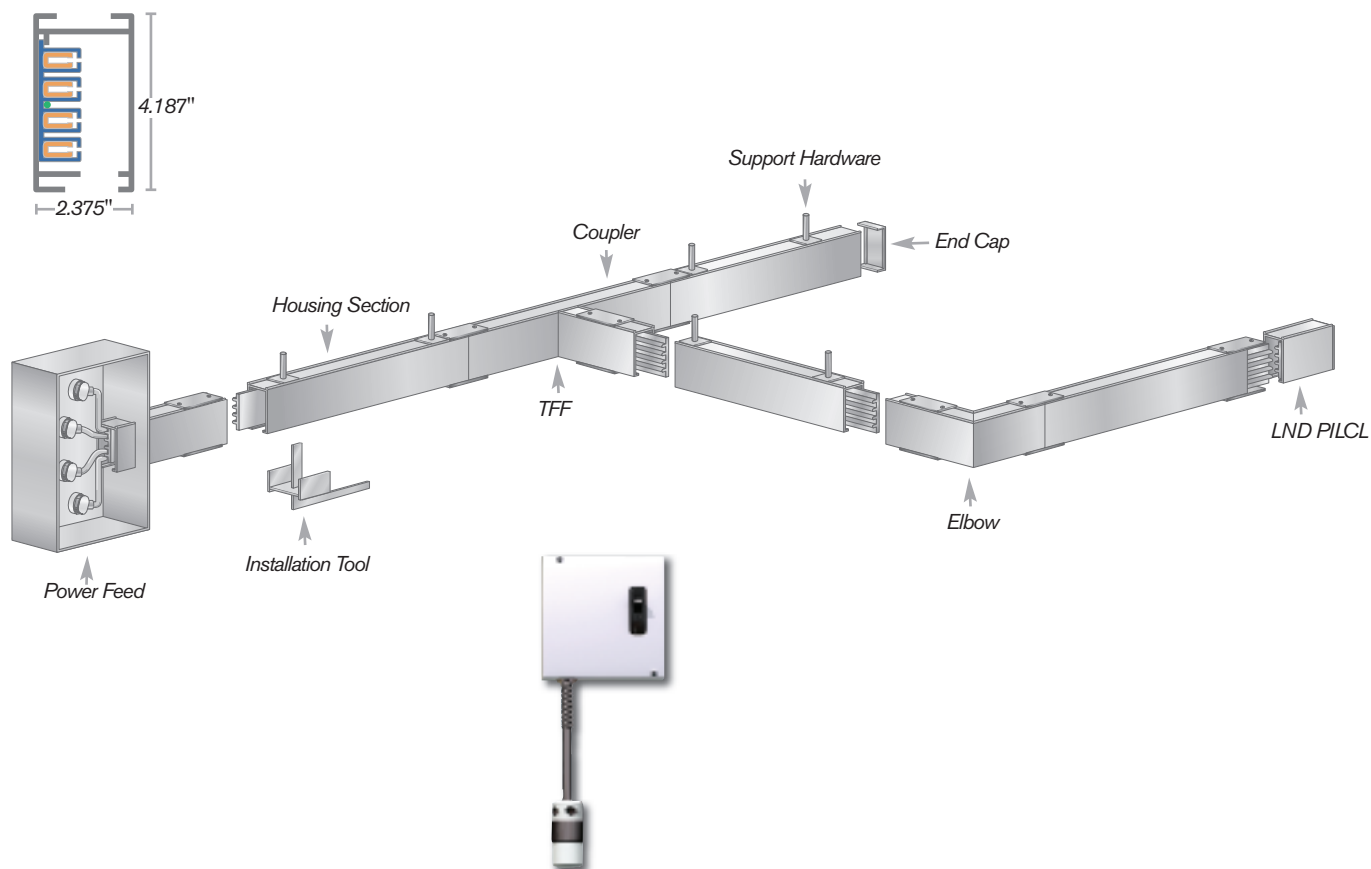
Universities and Labs

Flexibility, adaptability, lower costs and sustainability are just a few reasons why STARLINE is the preferred power choice for universities and labs.

Busway Systems

Our most popular, powerful and productive systems feature 250 Amp, 400 Amp and 800 Amp options for power. And most importantly, our plug-in units can fit any of these busways so that your investment is protected as your power needs change.

3 or 4 pole



| System No. | Amp | Volts | Neutral | ISO GRD. | Size |
|------------|-----|-------|----------|----------|---------------|
| B40 | 40 | 480 | 100% | NO | 1.66" x 1.62" |
| B50 | 50 | 480 | 100% | NO | 1.66" x 1.62" |
| B60C | 60 | 480 | 100% | NO | 1.66" x 1.62" |
| B60C | 60 | 600 | 100% | NO | 2.58" x 1.79" |
| B100C | 100 | 600 | 100% | NO | 2.58" x 1.79" |
| B100NG | 100 | 600 | 200% | YES | 4.19" x 2.38" |
| B100A | 100 | 600 | 100% | NO | 4.19" x 2.38" |
| B100G | 100 | 600 | 100% | NO | 4.19" x 2.38" |
| B160 | 160 | 600 | 100% | NO | 4.19" x 2.38" |
| B225 | 225 | 600 | 100% | NO | 4.19" x 2.38" |
| B225G | 225 | 600 | 100% | YES | 4.19" x 2.38" |
| B250T5 | 250 | 600 | 100% | NO | 4.25"x 5.05" |
| B250T5N | 250 | 600 | oversize | NO | 4.25"x 5.05" |
| B250T5NG | 250 | 600 | oversize | YES | 4.25"x 5.05" |
| B400T5 | 400 | 300 | 100% | NO | 5.7" x 5.05" |
| B400T5NG | 400 | 600 | 150% | YES | 5.7" x 5.05" |
| B800T5 | 800 | 600 | 100% | NO | 6.4" x 5.05" |
| B800T5G* | 800 | 600 | 100% | YES | 6.4" x 5.05" |

*Please contact UEC. for availability.

STARLINE Track Busway is the simple, versatile, fast and economical solution for supplying power to electrical loads. And our cutting-edge engineering gives you the unique ability to instantly tap into the busway at any location, with a variety of plug-in units.

STARLINE
Plug-In Raceway



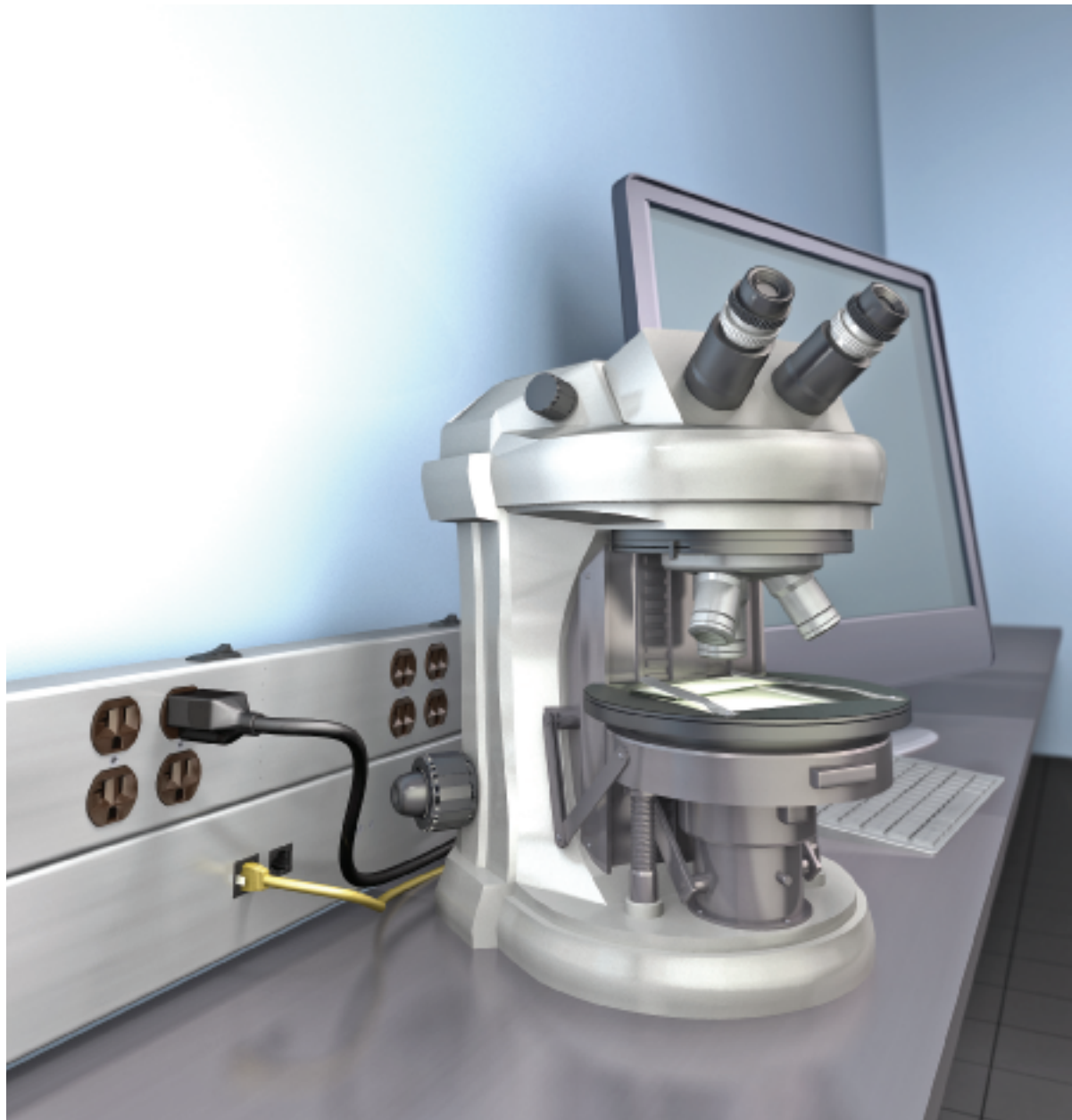
Next generation raceway for today's power needs.

STARLINE Plug-In Raceway was created to meet the ever-changing power distribution and datacom needs of research, pharmaceutical, and university labs, as well as hospitals and data labs. Though it may look like other raceway products, STARLINE Plug-In Raceway has the unique ability to **add** or **relocate** plug-in modules anywhere on the raceway quickly and easily.

When changing displays or adding modules, you can easily reconfigure circuits, receptacles and wiring. You simply snap the pre-assembled plug-in modules into place on the raceway backplane and the connection to power is made automatically without having to interrupt power.

STARLINE®
PLUG-IN RACEWAY





Features

Available in 20, 40 or 60 amps bussing; 120V or 240V; 5 wire.

Customizable lengths of raceway sections up to 10ft.

Optional Isolated Ground

Various plug-in modules are available complete with breaker and receptacle, and can be relocated anywhere on the raceway quickly and easily.

Plug-in modules are available in single phase and three phase configurations up to 30 amps.

A variety of power feeds, elbows and fittings are available.

Optional datacom channel is available for data, video and audio applications.



Industries

Data Labs, Hospitals & Universities

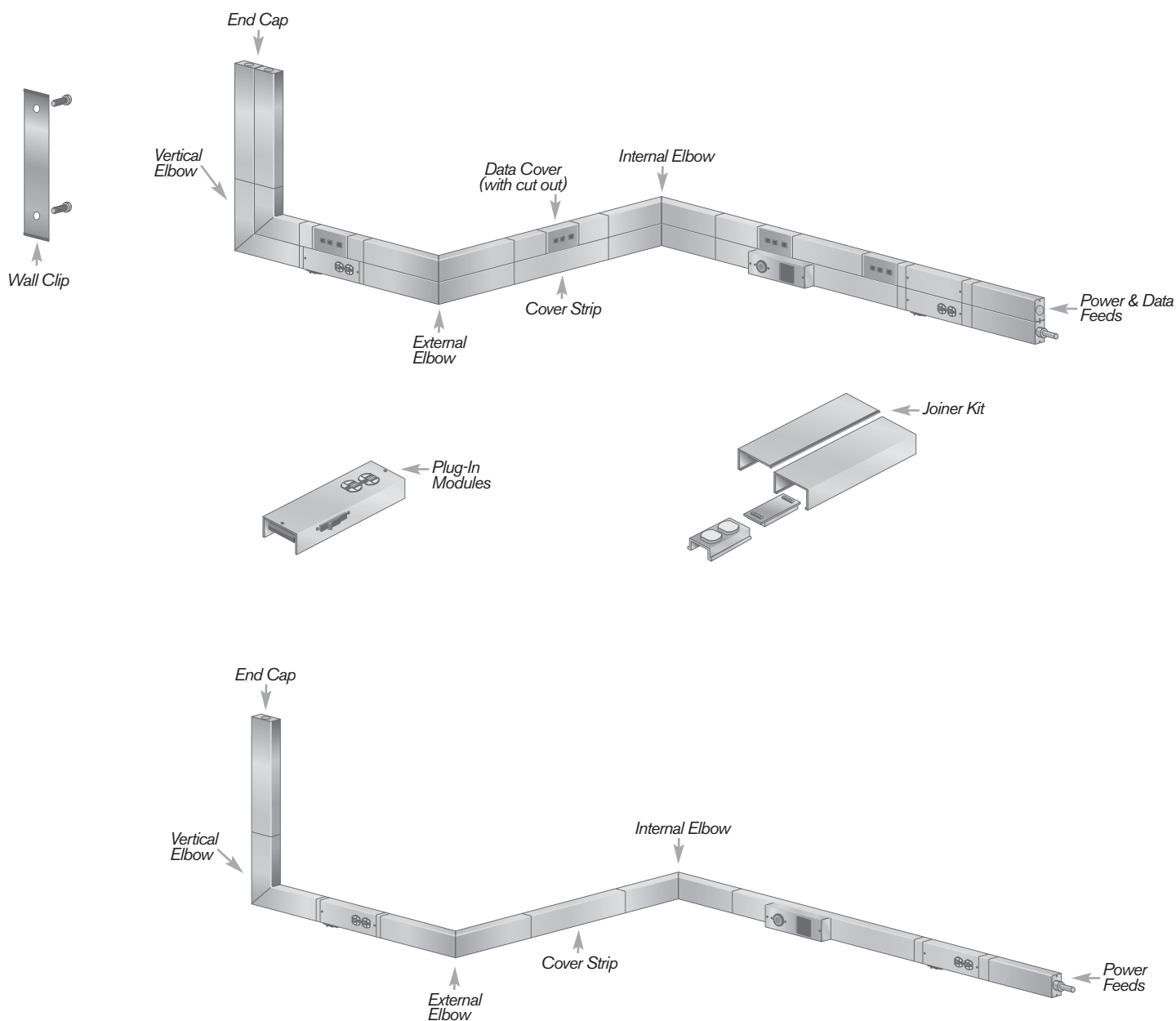
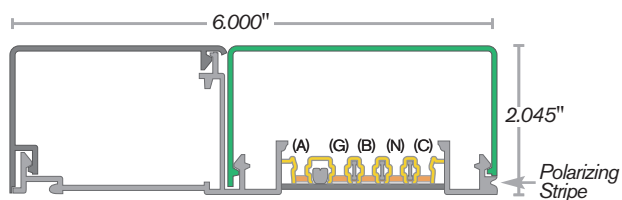
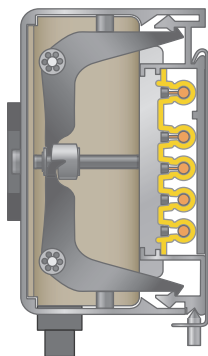
Designed to provide flexibility and reliability, STARLINE Plug-In Raceway helps data center labs, hospitals and universities run at full efficiency.

Retail

STARLINE Plug-In Raceway is ideal for the fast-paced retail environment with modules that are so easy to install, an electrician is not needed to add power.

STARLINE Plug-In Raceway is available in customizable lengths up to 10 feet. And various modules are offered complete with breaker and receptacle, and in both single phase and three phase configurations up to 30 amps.

SBWMC Installed





168 Georgetown Road | Canonsburg, PA 15317 | 800-245-6378 | +1-724-597-7800 | www.StarlinePower.com | info@uecorp.com



Universal Electric Corporation (UEC), the manufacturer of STARLINE, has been a leader in power distribution since 1924. The company's founders led the way for many new technologies in the power distribution equipment industry. Today, this family tradition of innovation continues to pave the way for safer, more innovative and more reliable electrical power distribution systems. Visit **www.StarlinePower.com** for your Flexible Power Solutions. For installation details, RS Means Electrical Estimating cost comparisons, and actual case histories of projects where savings with STARLINE have been documented, contact UEC's Customer Service Department at 1-800-245-6378 or +1 724-597-7800.



Most STARLINE systems and most standard components are UL, CE or ETL listed.
Manufactured in the USA.

R99272-051 3/12