



CELLTRAQ ENTERPRISE BATTERY ASSET MANAGEMENT



Midtronics **CELLTRAQ** Battery Data Management System was developed to address the changing needs of the users of Stationary back-up batteries. As power reliability becomes more and more critical each day in the telecommunications, data management, utility and other industries, the management of the batteries that provide this reliability also grows in complexity and importance. **CELLTRAQ** was developed to address this growing importance and simplify the process of battery maintenance.

The key objective is getting the data that is collected in the field to a central location for review and analysis. This allows for:

- Simplification of the testing/monitoring/collection process
- Effective analysis of battery assets by qualified and experience personnel
- Efficient process management, including budget management of scheduled battery replacement



INNOVATION



TECHNOLOGY



QUALITY



WORLDWIDE

Midtronics **CELLTRAQ** Enterprise Battery Asset Management System simplifies the process of battery management, allowing for storage, analysis and reporting of battery information from a centralized location

CELLTRAQ is a full enterprise database system designed to manage battery system data generated by maintenance routines using Midtronics **CELLTRON Ultra** handheld battery testers or **CELLGUARD** automated remote monitoring equipment.

It features:

- Server based architecture
- Provides centralized data storage, data access and management from any web access point
- Manages battery test and monitoring data from a centralized database, with global access
- Streamlines review of information and safeguards historical data
- All battery asset information is in one place, not scattered about in various locations or on different computers
- Instant indication of battery asset conditions throughout enterprise from one on-screen indicator
- Ensures efficient review of system state of health



System status data is monitored around the clock by the CELLGUARD sensor and sent wirelessly...

or it is collected using hand-held diagnostic tools such as the CELLTRON ULTRA and transferred via data media...





CELLGUARD System

- Simple, familiar user-friendly set-up, navigation and reporting
- System-derived notification of battery faults via e-mail and text message
- Includes suggested corrective action for technician
- Multiple contact notification
- Records corrective action and audit trail
- Graphical presentation of battery system trends for rapid identification of potential future faults
- Centralized repository of battery information,

including installation date, cost and performance specifications

- Displays and produces formatted reports for key battery performance parameters/measures in tabular or graphical format
- Battery Conductance
- Voltage
- Temperature
- Discharge performance
- Measurements are captured, recorded and time-stamped at each occurrence for effective battery life history reporting and analysis

Graphical User Interface and Reporting

CELLTRAQ has been designed to facilitate efficient understanding of system status. The user interface allows for intuitive navigation between regions, sites and down to the battery level. The system provides advance notification of battery problems through multiple communication vehicles, including on-screen, e-mail and text messaging. Reports are customizable to suit the needs of field technicians to suppliers to executives.

Data is collected at a server, and analyzed and

Once on a server, system status can be published and made available to anyone with internet access



Why CELLTRAQ?

- Improves overall power system reliability by centrally tracking, trending and forecasting battery performance
- Enhances return on battery asset investment through improved maintenance processes, extending battery usable life
- Augments maintenance efficiency
- Extends visibility of battery performance, faults and corrective action throughout the organization

System Requirements

- Windows Operating System
- Tomcat Web Server
 - Tomcat: 2G RAM or above (4G is recommended)
 - CPU: 2.6G or above
- SQL Server 2000/2005 Database
 - Database: 4G RAM or above (8G is recommended)
 - CPU: 2.6G or above

Installation CD provides, in addition to the Server Application, Database, and SMTP Tester Interface:

- Installation Manual
- JDBC-SQL Server Driver
- Java Development Kit (JDK)
- Tomcat

Figure 1:
User interface—an organized approach to managing data/user interface



Figure 2:
An example of graphical data output

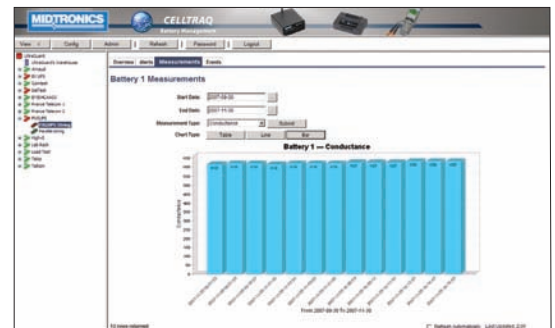
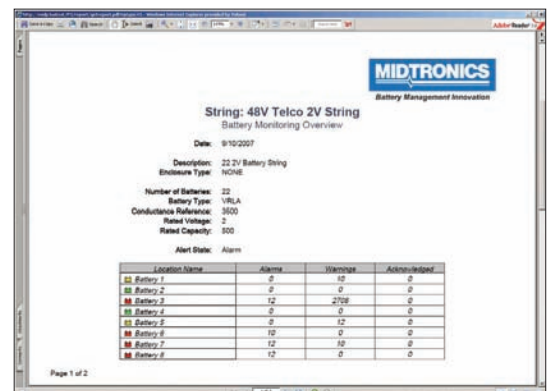


Figure 3:
Printed report output



Corporate Headquarters

Willowbrook, IL USA
USA Toll Free: 1.800.776.1995
Phone: 1.630.323.2800
Fax: 1.630.323.2844
E-Mail: net2@midtronics.com

Canadian Inquiries

Toll Free: 1.866.592.8053
Fax: 1.630.323.7752
E-Mail: canada@midtronics.com

Midtronics b.v.

European Headquarters
Serving Europe, Africa, the Middle East, and The Netherlands
Phone: +31 306 868 150
Fax: +31 306 868 158
E-Mail: info-europe@midtronics.com

European Sales Locations

IJsselstein, The Netherlands
Paris, France
Dusseldorf, Germany

Midtronics China Office

China Operations
Shenzhen, China
Phone: +86 755 8202 2037
Fax: +86 755 8202 2039
E-Mail: chinainfo@midtronics.com
Asia/Pacific (excluding China)
Contact Corporate Headquarters at
+1.630.323.2800 or
E-Mail: asiapacific@midtronics.com